

JEFFERSON VI



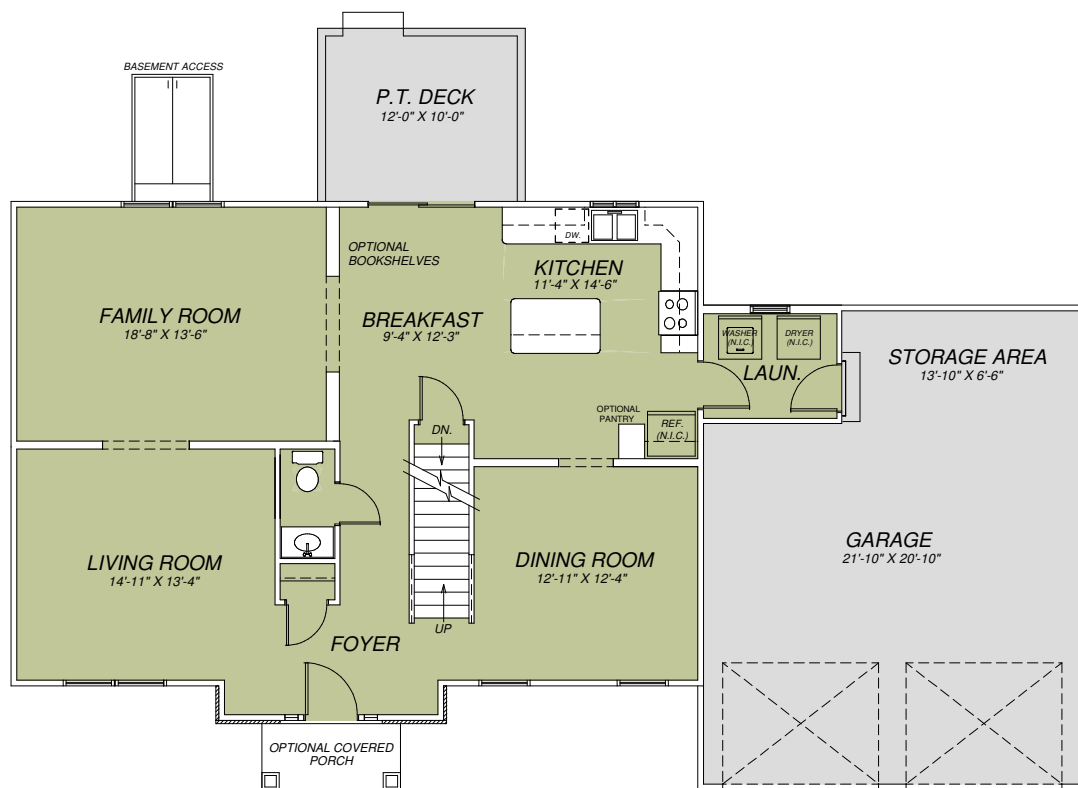
McNaughton Homes
Community Builder

www.McNaughtonhomes.com
(717) 234-4000

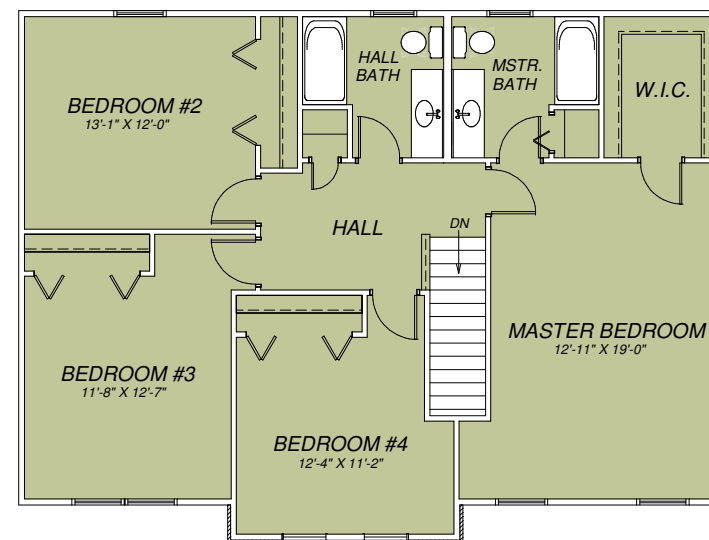


THE JEFFERSON VI - CUSTOM

This quality crafted two story features 2,347 square feet of luxurious living space. Four bedrooms, two and 1/2 baths. Formal living and dining rooms. A generously sized family room. Kitchen with island and breakfast area with sliding glass door to deck. First floor laundry, oversized two car front entry garage and full basement are also included.



FIRST FLOOR



SECOND FLOOR



ALTHOUGH ALL ILLUSTRATIONS AND SPECIFICATIONS ARE BELIEVED TO BE CORRECT AT THE TIME OF PUBLICATION, ACCURACY CANNOT BE GUARANTEED. THE RIGHT IS RESERVED TO MAKE CHANGES WITHOUT NOTICE OR OBLIGATION. ROOM SIZES SHOWN ARE APPROXIMATE. UTILITY LOCATIONS AND BASEMENT WINDOWS MAY VARY. SOME FEATURES SHOWN MAY BE OPTIONAL AND NOT INCLUDED IN PRICING. SEE SALES PERSON FOR DETAILS.